

Proposal to Establish a Regional Partnership for METCO

Lincoln Public Schools,
Sudbury Public Schools, and
Lincoln-Sudbury Regional High School

Background & Commitment

- * 45 years of successfully diversifying suburban districts, allowing all students to learn about each other's cultures beliefs, and points of view.
- * Decreasing funding of METCO by State since FY2008 with an anticipated 5% cut expected in FY2011.
- * Consolidation of METCO Director would allow each district to improve educational services.
- * Consolidation of METCO Director does NOT mean loss of local control.
- * Lincoln, Sudbury, and Lincoln-Sudbury are all fully committed to preserving the current number of children in the program.

The Process

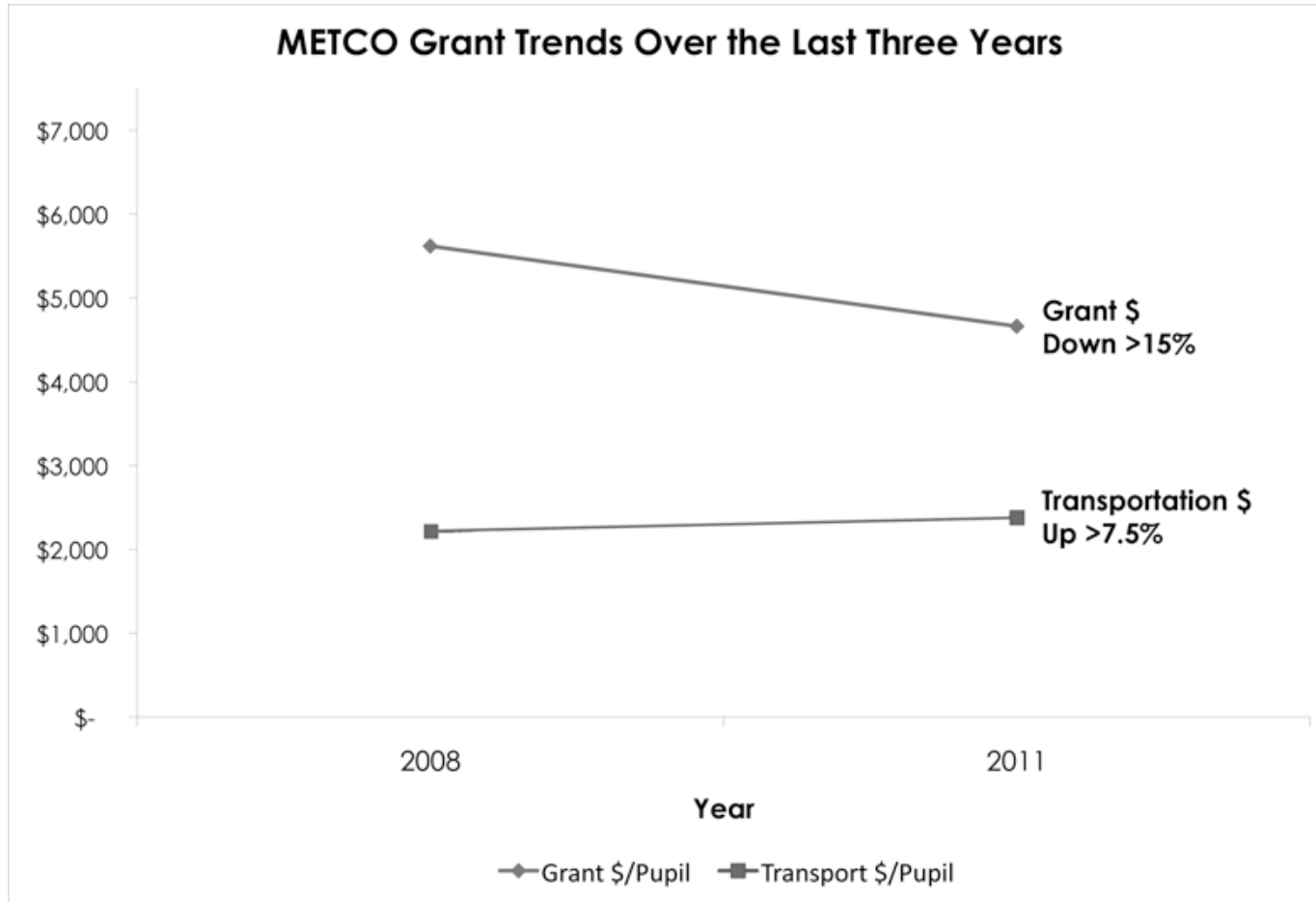
- * Superintendents began meeting last year to discuss cooperation with regard to METCO in the face of consecutive years of significant grant reduction.
- * METCO became one focus of the G4 leadership this year.
- * METCO Directors and administrators from G4 districts held meetings and generated a report.
- * In response to the G4 METCO report, the Superintendents of Lincoln, Sudbury, and Lincoln-Sudbury developed a proposal for consolidation.

Brief History of METCO Grant Reductions

	Lincoln	Sudbury	Lincoln-Sudbury
FY 2008	\$ 517,114	\$ 438,559	\$505,732
FY 2009	\$ 488,706	\$ 398,770	\$473,006
FY 2010	\$ 465,985	\$ 371,573	\$446,604
FY 2011 (proposed)	\$ 442,685	\$ 352,994	\$424,274

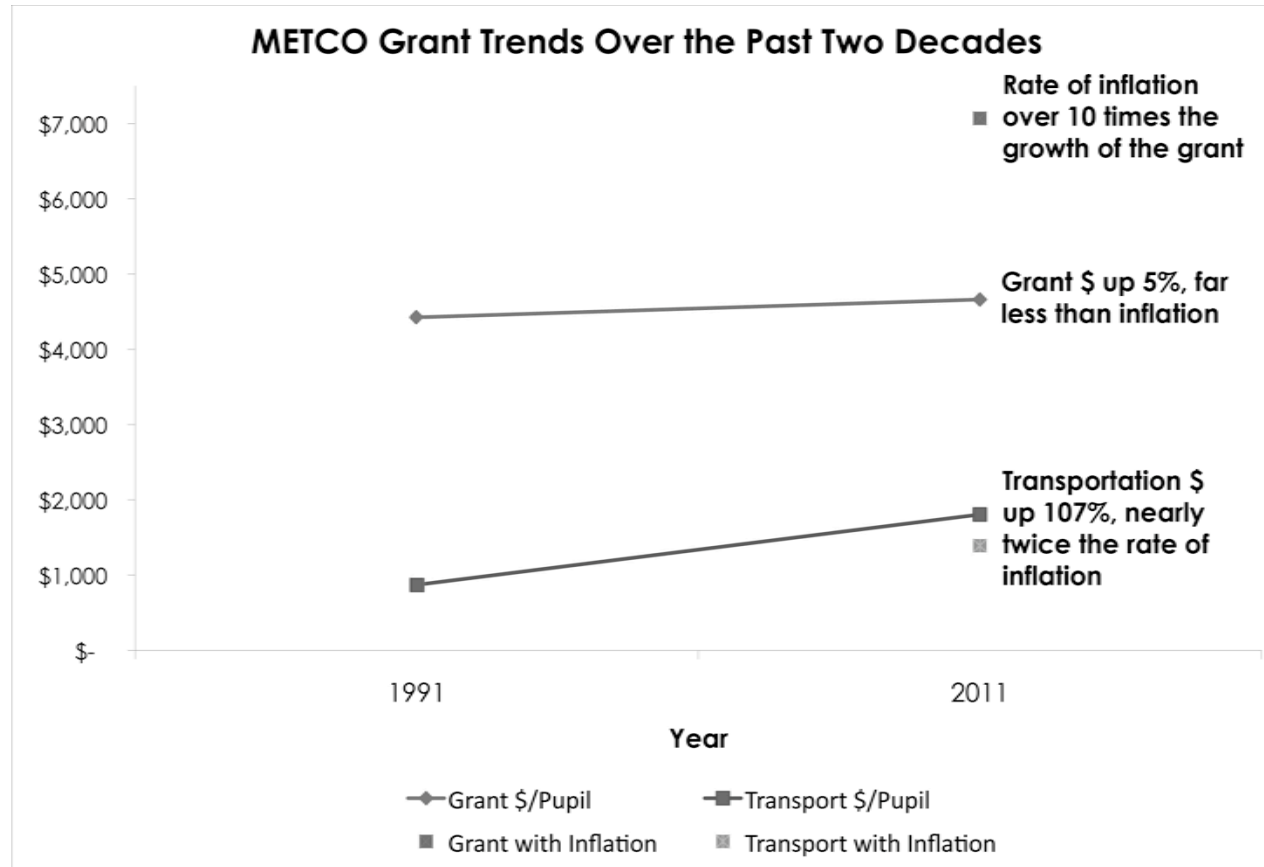
- A total reduction of between 10% and 15% from FY 2008 to FY 2010.
- FY 2011 includes a likely additional reduction of 5%.

The Challenge



With METCO grant money declining and transportation costs escalating, less the money is left to provide direct educational support to our Boston students.

The Challenge



Note: Inflation calculated using CPI Inflation Calculator - US Bureau of Labor Statistics

While METCO grant reductions in recent years precipitated this proposal, the money left for educational supports has been dwindling as the grant hasn't kept up with inflation and transportation costs have out paced inflation.

FY11 Budget Using Current Model

	Lincoln	Sudbury	LSRHS
FY11 Grant Allocation	\$ 442,685	\$ 352,994	\$424,274
Director	\$99,755	\$41,032	\$93,508
Administrative Asst.	\$29,573		
Elementary Academic Adv.			
MS Academic Advisor	\$61,214	\$26,338	
HS Academic Advisor			\$40,700
Social Worker	\$73,333		
Bus Monitors	\$20,176	\$43,544	
Instructional Assistants	\$20,000		\$41,381
Before/After-school Tutors	\$5,000	\$35,000	
Teacher (Special/General)	\$56,024		\$74,000
Transportation	\$129,240	\$217,700	\$164,275
Total	\$494,630	\$363,614	\$413,864
Balance	(\$51,630)	(\$10,620)	\$10,410

Current Staffing

after reductions in recent years, particularly around the Administrative Assistant position

	Lincoln	Sudbury	LSRHS
Director	1.0	0.6	1.0
Administrative Assistant	1.0 (school year)	In-kind support	
Elementary Academic Advisor			
Middle School Academic Advisor	1.0	1.0 (tutor)	
High School Academic Advisor			1.0
Social Worker	1.0		
Instructional Assistants	1.0		1.3
Bus Monitors	2.0	2.0	
After/Before School Tutors		1.25	
Teacher (Special/General)	1.0		1.0

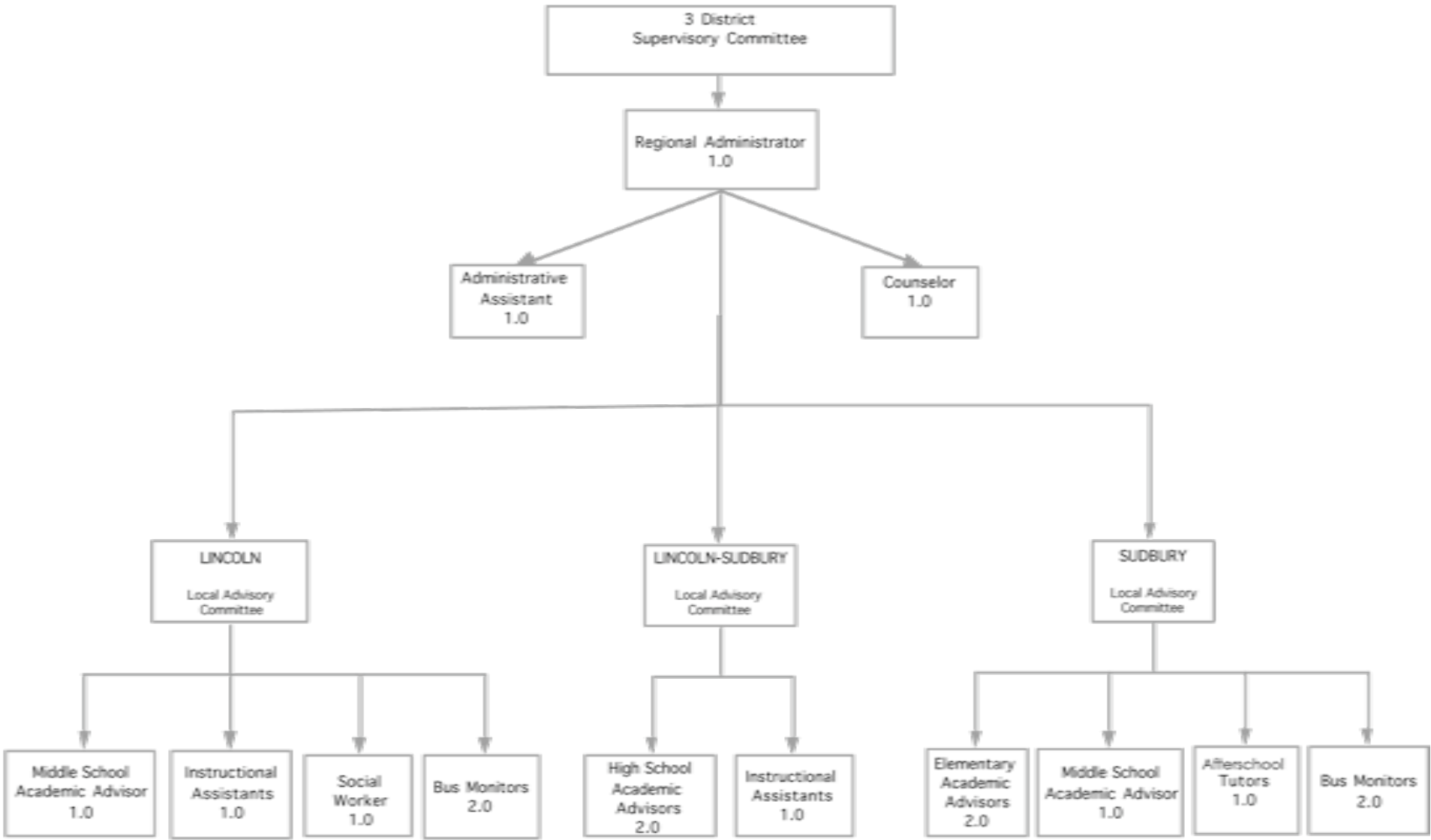
Cutbacks involve more than just staff. Boston buses have been reduced – this frequently has involved fewer “late buses,” which in turn reduces students ability to access the extracurricular program. Many programs intended to support student academic success have also been lost due to the grant reduction.

The Proposed Staffing

Shared amongst three districts: Regional Administrator 1.0 Administrative Assistant 1.0 Regional Adjustment Counselor 1.0			
	Lincoln	Sudbury	LSRHS
Elementary Academic Advisor		2.0	
Middle School Academic Advisor	1.0	1.0	
High School Academic Advisor			2.0
Social Worker	1.0		
Instructional Assistants	1.0		1.0
Bus Monitors	2.0	2.0	
Before/After-school Tutor		1.0	
Teacher (Special/General)	1.0		1.0

Consolidation has the potential to increase the educational support available to students in the 3 districts by over 2.75 FTE.

Proposed Organization Chart



FY11 Budget - Collaborative Model

	Lincoln	Sudbury	LSRHS
FY11 Grant Allocation	\$ 442,685	\$ 352,994	\$424,274
Regional Director	\$36,842	\$26,316	\$36,842
Administrative Asst.	\$12,895	\$9,211	\$12,895
Clinical Counselor	\$23,947	\$17,105	\$23,947
Elementary Academic Advisors		\$56,000	
MS Academic Advisors	\$61,214	\$28,000	
HS Academic Advisors			\$81,400
Social Worker	\$73,333		
Instructional Assistants	\$20,000		\$28,592
Bus Monitors	\$20,176	\$43,544	
Before/After-school Tutors	\$5,000	\$27,688	
Teacher (Special/General)	\$56,024		\$74,000
Transportation	\$129,240	\$145,130	\$164,275
Total	\$438,671	\$352,994	\$421,951
Balance	\$4,014	-0-	\$2,323

Benefits of Collaboration

- * Improved academic support with focus on learning and narrowing achievement gaps.
- * Improved transitions between grades.
- * Increased opportunities for the faculty and staff in the tri-district collaboration for professional development in the areas of culturally responsive curriculum and instruction, strategies to close achievement gaps and sharing practices that work.
- * A streamlined, consistent enrollment and placement process which is responsive to the changes proposed by METCO Inc.
- * Greater availability for the Regional Director and Administrative Assistant for improved communications and liaison with parents, faculty, students and METCO Inc.
- * Access to the services of a clinical/adjustment counselor to support the students and families for success.
- * An easier and more consistent structure to consider future collaboration benefits.
- * A more consistent and stronger voice within the state METCO program.
- * A broader parent base for support of the program and support of each other.
- * Enhanced accountability for the outcomes of the program and for the success of students.

Two Analogous Districts

- * Concord/Concord-Carlisle: 1 Director for 188 students, serving both Concord K-8 and Concord-Carlisle 9-12
- * Lexington: 1 METCO Director for 267 students, serving a K-12 town with one high school, two middle schools, and six elementary schools
- * **Our three district proposal:** 1 Director for 247 students, serving Lincoln K-8, Sudbury K-8, and Lincoln-Sudbury 9-12, with one high school, two middle schools, and five elementary schools