

# How to Access E-Mail at L-S using Mac OS X

The E-Mail service at L-S is known as either Quantum or First Class. To access your account, follow these steps:

1. Find the Dock:



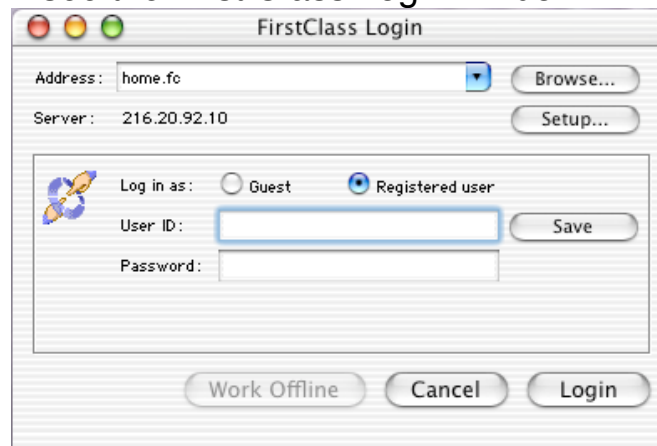
If this is not immediately visible, you may need to move the mouse to the four sides of the screen and hold it there for a moment.

2. Click on the following icon:



When you move the mouse over this icon, white text should appear that reads “First Class®”.

3. You should now see the First Class Login window:



Now type in the User ID and password you have been supplied in the appropriate fields, and press enter or click on the “Login” button.

